

HIGHLIGHTS OF PRESCRIBING INFORMATION

These highlights do not include all the information needed to use TYSABRI safely and effectively. See full prescribing information for TYSABRI.

TYSABRI (natalizumab) injection, for intravenous use
Initial U.S. Approval: 2004

WARNING: PROGRESSIVE MULTIFOCAL LEUKOENCEPHALOPATHY

See full prescribing information for complete boxed warning

- TYSABRI increases the risk of progressive multifocal leukoencephalopathy (PML), an opportunistic viral infection of the brain that usually leads to death or severe disability (5.1)
- Monitor patients, and withhold TYSABRI immediately at the first sign or symptom suggestive of PML (4, 5.1)
- TYSABRI is available only through a special restricted distribution program called the TOUCH® Prescribing Program and must be administered only to patients enrolled in this program (5.1, 5.2)

RECENT MAJOR CHANGES

Warnings and Precautions

- | Progressive Multifocal Leukoencephalopathy (5.1) 12/2012

INDICATIONS AND USAGE

TYSABRI is an integrin receptor antagonist indicated for treatment of:

Multiple Sclerosis (MS) (1.1)

- As monotherapy for the treatment of patients with relapsing forms of multiple sclerosis to delay the accumulation of physical disability and reduce the frequency of clinical exacerbations. TYSABRI is generally recommended for patients who have had an inadequate response to, or are unable to tolerate, an alternate MS therapy.

Crohn's Disease (CD) (1.2)

- Inducing and maintaining clinical response and remission in adult patients with moderately to severely active Crohn's disease with evidence of inflammation who have had an inadequate response to, or are unable to tolerate, conventional CD therapies and inhibitors of TNF- α .

Important Limitations:

- In CD, TYSABRI should not be used in combination with immunosuppressants or inhibitors of TNF- α .

DOSAGE AND ADMINISTRATION

- 300 mg infused intravenously over approximately one hour, every four weeks. Do not give as an intravenous push or bolus (2.1, 2.2).
- TYSABRI solution must be administered within 8 hours of preparation (2.3).

FULL PRESCRIBING INFORMATION: CONTENTS*

WARNING: PROGRESSIVE MULTIFOCAL LEUKOENCEPHALOPATHY

1 INDICATIONS AND USAGE

- 1.1 Multiple Sclerosis (MS)
- 1.2 Crohn's Disease (CD)

2 DOSAGE AND ADMINISTRATION

- 2.1 Multiple Sclerosis
- 2.2 Crohn's Disease
- 2.3 Preparation Instructions
- 2.4 Administration Instructions

3 DOSAGE FORMS AND STRENGTHS

4 CONTRAINDICATIONS

5 WARNINGS AND PRECAUTIONS

- 5.1 Progressive Multifocal Leukoencephalopathy (PML)
- 5.2 Distribution Program for TYSABRI
- 5.3 Hypersensitivity/Antibody Formation
- 5.4 Immunosuppression/Infections
- 5.5 Hepatotoxicity
- 5.6 Laboratory Test Abnormalities
- 5.7 Immunizations

6 ADVERSE REACTIONS

- 6.1 Clinical Trials Experience
- 6.2 Immunogenicity
- 6.3 Postmarketing Experience

7 DRUG INTERACTIONS

- Observe patients during the infusion and for one hour after the infusion is complete (2.4).
- In CD, discontinue in patients that have not experienced therapeutic benefit by 12 weeks of induction therapy, and in patients that cannot discontinue chronic concomitant steroids within six months of starting therapy (2.2).

DOSAGE FORMS AND STRENGTH

- Solution [300 mg per 15 mL vial] for dilution prior to infusion (3).

CONTRAINDICATIONS

- Patients who have or have had PML (4).
- Patients who have had a hypersensitivity reaction to TYSABRI (4, 5.3).

WARNINGS AND PRECAUTIONS

- Progressive Multifocal Leukoencephalopathy (PML): Has occurred in patients who received TYSABRI. Patients who have significantly compromised immune system function should not ordinarily be treated with TYSABRI. Obtain an MRI scan in MS patients prior to initiating TYSABRI. Monitor MS and CD patients and withhold TYSABRI at the first sign or symptom suggestive of PML. Treatment duration, prior immunosuppressant use, and presence of anti-JC virus antibodies are associated with increased risk of PML in TYSABRI-treated patients (5.1).
- Hypersensitivity reactions: Serious hypersensitivity reactions (e.g., anaphylaxis) have occurred. Permanently discontinue TYSABRI if such a reaction occurs (5.3).
- Immunosuppression/Infections: TYSABRI may increase the risk for certain infections. Monitor patients for development of infections due to increased risk with use of TYSABRI (5.4).
- Hepatotoxicity: Clinically significant liver injury has occurred. Discontinue TYSABRI in patients with jaundice or evidence of liver injury (5.5).

ADVERSE REACTIONS

The most common adverse reactions (incidence $\geq 10\%$) in MS were headache, fatigue, arthralgia, urinary tract infection, lower respiratory tract infection, gastroenteritis, vaginitis, depression, pain in extremity, abdominal discomfort, diarrhea NOS, and rash; and in CD were headache, upper respiratory tract infections, nausea, and fatigue (6.1)

To report SUSPECTED ADVERSE REACTIONS, contact Biogen Idec at 1-800-456-2255 or FDA at 1-800-FDA-1088 or www.fda.gov/medwatch.

USE IN SPECIFIC POPULATIONS

- Pregnancy: Based on animal data, may cause fetal harm. (8.1)

See 17 for PATIENT COUNSELING INFORMATION and Medication Guide.

Revised: 04/2013

8 USE IN SPECIFIC POPULATIONS

- 8.1 Pregnancy
- 8.3 Nursing Mothers
- 8.4 Pediatric Use
- 8.5 Geriatric Use

10 OVERDOSAGE

11 DESCRIPTION

12 CLINICAL PHARMACOLOGY

- 12.1 Mechanism of Action
- 12.2 Pharmacodynamics
- 12.3 Pharmacokinetics

13 NONCLINICAL TOXICOLOGY

- 13.1 Carcinogenesis, Mutagenesis, and Impairment of Fertility
- 13.2 Animal Toxicology and/or Pharmacology

14 CLINICAL STUDIES

- 14.1 Multiple Sclerosis
- 14.2 Crohn's Disease

15 REFERENCES

16 HOW SUPPLIED/STORAGE AND HANDLING

17 PATIENT COUNSELING INFORMATION

- 17.1 General Counseling Information
- 17.2 Progressive Multifocal Leukoencephalopathy
- 17.3 Hypersensitivity Reactions
- 17.4 Immunosuppression/Infections
- 17.5 Hepatotoxicity

*Sections or subsections omitted from the Full Prescribing Information are not listed.

TYSABRI® (natalizumab) Injection
FULL PRESCRIBING INFORMATION

WARNING: PROGRESSIVE MULTIFOCAL LEUKOENCEPHALOPATHY

TYSABRI increases the risk of progressive multifocal leukoencephalopathy (PML), an opportunistic viral infection of the brain that usually leads to death or severe disability. Cases of PML have been reported in patients taking TYSABRI who were recently or concomitantly treated with immunomodulators or immunosuppressants, as well as in patients receiving TYSABRI as monotherapy [see *Warnings and Precautions (5.1)*].

- **Because of the risk of PML, TYSABRI is available only through a special restricted distribution program called the TOUCH® Prescribing Program. Under the TOUCH® Prescribing Program, only prescribers, infusion centers, and pharmacies associated with infusion centers registered with the program are able to prescribe, distribute, or infuse the product. In addition, TYSABRI must be administered only to patients who are enrolled in and meet all the conditions of the TOUCH® Prescribing Program [see *Warnings and Precautions (5.1, 5.2)*].**
- **Healthcare professionals should monitor patients on TYSABRI for any new sign or symptom that may be suggestive of PML. TYSABRI dosing should be withheld immediately at the first sign or symptom suggestive of PML. For diagnosis, an evaluation that includes a gadolinium-enhanced magnetic resonance imaging (MRI) scan of the brain and, when indicated, cerebrospinal fluid analysis for JC viral DNA are recommended [see *Contraindications (4), Warnings and Precautions (5.1)*].**

1 INDICATIONS AND USAGE

1.1 Multiple Sclerosis (MS)

TYSABRI is indicated as monotherapy for the treatment of patients with relapsing forms of multiple sclerosis to delay the accumulation of physical disability and reduce the frequency of clinical exacerbations. The efficacy of TYSABRI beyond two years is unknown.

Because TYSABRI increases the risk of progressive multifocal leukoencephalopathy (PML), an opportunistic viral infection of the brain that usually leads to death or severe disability, TYSABRI is generally recommended for patients who have had an inadequate response to, or are unable to tolerate, an alternate multiple sclerosis therapy [see *Boxed Warning, Warnings and Precautions (5.1)*].

Safety and efficacy in patients with chronic progressive multiple sclerosis have not been studied.

1.2 Crohn's Disease (CD)

TYSABRI is indicated for inducing and maintaining clinical response and remission in adult patients with moderately to severely active Crohn's disease with evidence of inflammation who have had an inadequate response to, or are unable to tolerate, conventional CD therapies and inhibitors of TNF- α . TYSABRI should not be used in combination with immunosuppressants

(e.g., 6-mercaptopurine, azathioprine, cyclosporine, or methotrexate) or inhibitors of TNF- α [see *Boxed Warning, Warnings and Precautions (5.1)*].

2 DOSAGE AND ADMINISTRATION

2.1 Multiple Sclerosis (MS)

Only prescribers registered in the MS TOUCH[®] Prescribing Program may prescribe TYSABRI for multiple sclerosis [see *Boxed Warning, Warnings and Precautions (5.2)*]. The recommended dose of TYSABRI for multiple sclerosis is 300 mg intravenous infusion over one hour every four weeks.

2.2 Crohn's Disease (CD)

Only prescribers registered in the CD TOUCH[®] Prescribing Program may prescribe TYSABRI for Crohn's disease [see *Boxed Warning, Warnings and Precautions (5.1)*].

The recommended dose of TYSABRI for Crohn's disease is 300 mg intravenous infusion over one hour every four weeks. TYSABRI should not be used with concomitant immunosuppressants (e.g., 6-mercaptopurine, azathioprine, cyclosporine, or methotrexate) or concomitant inhibitors of TNF- α . Aminosalicylates may be continued during treatment with TYSABRI.

If the patient with Crohn's disease has not experienced therapeutic benefit by 12 weeks of induction therapy, discontinue TYSABRI. For patients with Crohn's disease that start TYSABRI while on chronic oral corticosteroids, commence steroid tapering as soon as a therapeutic benefit of TYSABRI has occurred; if the patient with Crohn's disease cannot be tapered off of oral corticosteroids within six months of starting TYSABRI, discontinue TYSABRI. Other than the initial six-month taper, prescribers should consider discontinuing TYSABRI for patients who require additional steroid use that exceeds three months in a calendar year to control their Crohn's disease.

2.3 Dilution Instructions

- (1) Use aseptic technique when preparing TYSABRI solution for intravenous infusion. Each vial is intended for single use only.
- (2) TYSABRI is a colorless, clear to slightly opalescent concentrate. Inspect the TYSABRI vial for particulate material and discoloration prior to dilution and administration. If visible particulates are observed and/or the liquid in the vial is discolored, the vial must not be used.
- (3) To prepare the solution, withdraw 15 mL of TYSABRI concentrate from the vial using a sterile needle and syringe. Inject the concentrate into 100 mL 0.9% Sodium Chloride Injection, USP. No other IV diluents may be used to prepare the TYSABRI solution.
- (4) Gently invert the TYSABRI solution to mix completely. Do not shake. Inspect the solution visually for particulate material prior to administration.
- (5) The final dosage solution has a concentration of 2.6 mg/mL.
- (6) Following dilution, infuse TYSABRI solution immediately, or refrigerate solution at 2 to 8°C, and use within 8 hours. If stored at 2 to 8°C, allow the solution to warm to room temperature prior to infusion. DO NOT FREEZE.

2.4 Administration Instructions

- Infuse TYSABRI 300 mg in 100 mL 0.9% Sodium Chloride Injection, USP, over approximately one hour (infusion rate approximately 5 mg per minute). Do not

administer TYSABRI as an intravenous push or bolus injection. After the infusion is complete, flush with 0.9% Sodium Chloride Injection, USP.

- Observe patients during the infusion and for one hour after the infusion is complete. Promptly discontinue the infusion upon the first observation of any signs or symptoms consistent with a hypersensitivity-type reaction [see *Warnings and Precautions* (5.3)].
- Use of filtration devices during administration has not been evaluated. Other medications should not be injected into infusion set side ports or mixed with TYSABRI.

3 DOSAGE FORMS AND STRENGTHS

TYSABRI is a concentrated solution that must be diluted prior to intravenous infusion. TYSABRI injection is supplied as 300 mg natalizumab in 15 mL (20 mg/mL) in a sterile, single-use vial free of preservatives.

4 CONTRAINDICATIONS

- TYSABRI is contraindicated in patients who have or have had progressive multifocal leukoencephalopathy (PML) [see *Boxed Warning, Warnings and Precautions* (5.1)].
- TYSABRI should not be administered to a patient who has had a hypersensitivity reaction to TYSABRI. Observed reactions range from urticaria to anaphylaxis [see *Warnings and Precautions* (5.3)].

5 WARNINGS AND PRECAUTIONS

5.1 Progressive Multifocal Leukoencephalopathy (PML)

Progressive multifocal leukoencephalopathy, an opportunistic infection caused by the JC virus (JCV) that typically only occurs in patients who are immunocompromised, developed in three patients who received TYSABRI in clinical trials [see *Boxed Warning*]. Two cases of PML were observed among 1869 patients with multiple sclerosis treated for a median of 120 weeks. The third case occurred among 1043 patients with Crohn's disease after the patient received eight doses. Both multiple sclerosis patients were receiving concomitant immunomodulatory therapy and the Crohn's disease patient had been treated in the past with immunosuppressive therapy.

In the postmarketing setting, additional cases of PML have been reported in multiple sclerosis and Crohn's disease patients who were receiving no concomitant immunomodulatory therapy. Three factors that are known to increase the risk of PML in TYSABI-treated patients have been identified:

- Longer treatment duration, especially beyond 2 years. There is limited experience in patients who have received more than 4 years of TYSABRI treatment.
- Prior treatment with an immunosuppressant (e.g., mitoxantrone, azathioprine, methotrexate, cyclophosphamide, mycophenolate mofetil).
- The presence of anti-JCV antibodies. Patients who are anti-JCV antibody positive have a higher risk for developing PML.

The risks and benefits of continuing treatment with Tysabri should be carefully considered in patients who are found to be anti-JCV antibody positive and have one or more additional risk factors. Patients with all three known risk factors have an estimated risk of PML of 11/1,000.

Consideration should be given to testing patients for anti-JCV antibody status prior to treatment or during treatment if antibody status is unknown. Infection by the JC virus is required for the development of PML. Anti-JCV antibody negative status indicates that exposure to the JC virus has not been detected. Patients who are anti-JCV antibody negative are still at risk for the development of PML due to the potential for a new JCV infection or a false negative test result. Therefore, patients with a negative anti-JCV antibody test result should be retested every 6 months. For purposes of risk assessment, a patient with a positive anti-JCV antibody test at any time is considered anti-JCV antibody positive regardless of the results of any prior or subsequent anti-JCV antibody testing. When assessed, anti-JCV antibody status should be determined using an analytically and clinically validated immunoassay.

Table 1: Estimated Incidence of PML Stratified by Risk Factor

Tysabri Exposure [†]	Anti-JCV Antibody Positive*	
	No Prior Immunosuppressant Use	Prior Immunosuppressant Use
1-24 months	<1/1,000	2/1,000
25-48 months	5/1,000	11/1,000

Notes: Based on postmarketing PML data as of September 5, 2012 and TYSABRI use data as of August 31, 2012.

[†]Data beyond 4 years of treatment are limited.

*Risk in anti-JCV antibody positive patients was estimated based on the assumptions that 18% of Tysabri-treated MS patients have a history of prior immunosuppressant treatment and that 55% of Tysabri-treated MS patients are anti-JCV antibody positive.

The anti-JCV antibody status was determined using an anti-JCV antibody test (ELISA) that has been analytically and clinically validated and is configured with detection and inhibition steps to confirm the presence of JCV-specific antibodies with a false negative rate of 3%.

Anti-JCV antibody testing should not be used to diagnose PML. Anti-JCV antibody testing should not be performed for at least two weeks following plasma exchange due to the removal of antibodies from the serum.

There are no known interventions that can reliably prevent PML or adequately treat PML if it occurs. It is not known whether early detection of PML and discontinuation of TYSABRI will mitigate the disease.

Ordinarily, patients receiving chronic immunosuppressant or immunomodulatory therapy or who have systemic medical conditions resulting in significantly compromised immune system function should not be treated with TYSABRI.

Because of the risk of PML, TYSABRI is available only under a special restricted distribution program, the TOUCH[®] Prescribing Program.

In multiple sclerosis patients, an MRI scan should be obtained prior to initiating therapy with TYSABRI. This MRI may be helpful in differentiating subsequent multiple sclerosis symptoms from PML.

In Crohn's disease patients, a baseline brain MRI may also be helpful to distinguish pre-existent lesions from newly developed lesions, but brain lesions at baseline that could cause diagnostic difficulty while on TYSABRI therapy are uncommon.

Healthcare professionals should monitor patients on TYSABRI for any new sign or symptom suggestive of PML. Typical symptoms associated with PML are diverse, progress over days to weeks, and include progressive weakness on one side of the body or clumsiness of limbs, disturbance of vision, and changes in thinking, memory, and orientation leading to confusion and personality changes. The progression of deficits usually leads to death or severe disability over weeks or months. Withhold TYSABRI dosing immediately at the first sign or symptom suggestive of PML.

For diagnosis of PML, an evaluation including a gadolinium-enhanced MRI scan of the brain and, when indicated, cerebrospinal fluid analysis for JC viral DNA are recommended. If the initial evaluations for PML are negative but clinical suspicion for PML remains, continue to withhold TYSABRI dosing and repeat the evaluations.

There are no known interventions that can adequately treat PML if it occurs. Three sessions of plasma exchange over 5 to 8 days were shown to accelerate TYSABRI clearance in a study of 12 patients with MS who did not have PML, although in the majority of patients alpha-4 integrin receptor binding remained high. Adverse events which may occur during plasma exchange include clearance of other medications and volume shifts, which have the potential to lead to hypotension or pulmonary edema. Although plasma exchange has not been studied in TYSABRI treated patients with PML, it has been used in such patients in the postmarketing setting to remove TYSABRI more quickly from the circulation. Anti-JCV antibody testing should not be performed during or for at least two weeks following plasma exchange due to the removal of antibodies from the serum.

Immune reconstitution inflammatory syndrome (IRIS) has been reported in the majority of TYSABRI treated patients who developed PML and subsequently discontinued TYSABRI. In almost all cases, IRIS occurred after plasma exchange was used to eliminate circulating TYSABRI. It presents as a clinical decline in the patient's condition after TYSABRI removal (and in some cases after apparent clinical improvement) that may be rapid, can lead to serious neurological complications or death and is often associated with characteristic changes in the MRI. TYSABRI has not been associated with IRIS in patients discontinuing treatment with TYSABRI for reasons unrelated to PML. In TYSABRI-treated patients with PML, IRIS has been reported within days to several weeks after plasma exchange. Monitoring for development of IRIS and appropriate treatment of the associated inflammation should be undertaken.

5.2 Distribution Program for TYSABRI

TYSABRI is available only under a special restricted distribution program called the TOUCH[®] Prescribing Program. Under the TOUCH[®] Prescribing Program, only prescribers, infusion centers, and pharmacies associated with infusion centers registered with the program are able to prescribe, distribute, or infuse the product. For prescribers and patients, the TOUCH[®] Prescribing Program has two components: MS TOUCH[®] (for patients with multiple sclerosis) and CD TOUCH[®] (for patients with Crohn's disease). TYSABRI must be administered only to patients who are enrolled in and meet all the conditions of the MS or CD TOUCH[®] Prescribing Program. Contact the TOUCH[®] Prescribing Program at 1-800-456-2255 [see *Boxed Warning*].

To enroll in the TOUCH[®] Prescribing Program, prescribers and patients are required to understand the risks of treatment with TYSABRI, including PML and other opportunistic

infections. Prescribers are required to understand the information in the Prescribing Information and to be able to:

- Educate patients on the benefits and risks of treatment with TYSABRI, ensure that the patient receives the Medication Guide, instruct them to read it, and encourage them to ask questions when considering TYSABRI. Patients may be educated by the enrolled prescriber or a healthcare provider under that prescriber's direction.
- Review the TOUCH[®] Prescriber/Patient Enrollment form for TYSABRI with the patient and answer all questions.
- As part of the initial prescription process for TYSABRI, obtain the patient's signature and initials on the TOUCH[®] program enrollment form, sign it, place the original signed form in the patient's medical record, send a copy to Biogen Idec, and give a copy to the patient.
- Report serious opportunistic and atypical infections with TYSABRI to Biogen Idec at 1-800-456-2255 and to the Food and Drug Administration's MedWatch Program at 1-800-FDA-1088.
- Evaluate the patient three months after the first infusion, six months after the first infusion, and every six months thereafter.
- Determine every six months whether patients should continue on treatment and if so reauthorize treatment every six months.
- Submit to Biogen Idec the TYSABRI Patient Status Report and Reauthorization Questionnaire six months after initiating treatment and every six months thereafter.

5.3 Hypersensitivity/Antibody Formation

Hypersensitivity reactions have occurred in patients receiving TYSABRI, including serious systemic reactions (e.g., anaphylaxis) which occurred at an incidence of <1%. These reactions usually occur within two hours of the start of the infusion. Symptoms associated with these reactions can include urticaria, dizziness, fever, rash, rigors, pruritus, nausea, flushing, hypotension, dyspnea, and chest pain. Generally, these reactions are associated with antibodies to TYSABRI.

If a hypersensitivity reaction occurs, discontinue administration of TYSABRI and initiate appropriate therapy. Patients who experience a hypersensitivity reaction should not be re-treated with TYSABRI. Hypersensitivity reactions were more frequent in patients with antibodies to TYSABRI compared to patients who did not develop antibodies to TYSABRI in both MS and CD studies. Therefore, the possibility of antibodies to TYSABRI should be considered in patients who have hypersensitivity reactions [see *Adverse Reactions (6.2)*].

Antibody testing: If the presence of persistent antibodies is suspected, antibody testing should be performed. Antibodies may be detected and confirmed with sequential serum antibody tests. Antibodies detected early in the treatment course (e.g., within the first six months) may be transient and disappear with continued dosing. Repeat testing at three months after the initial positive result is recommended in patients in whom antibodies are detected to confirm that antibodies are persistent. Prescribers should consider the overall benefits and risks of TYSABRI in a patient with persistent antibodies.

Experience with monoclonal antibodies, including TYSABRI, suggests that patients who receive therapeutic monoclonal antibodies after an extended period without treatment may be at higher risk of hypersensitivity reactions than patients who received regularly scheduled treatment. Given that patients with persistent antibodies to TYSABRI experience reduced

efficacy, and that hypersensitivity reactions are more common in such patients, consideration should be given to testing for the presence of antibodies in patients who wish to recommence therapy following a dose interruption. Following a period of dose interruption, patients testing negative for antibodies prior to re-dosing have a risk of antibody development with re-treatment that is similar to TYSABRI naïve patients [see *Adverse Reactions (6.2)*].

5.4 Immunosuppression/Infections

The immune system effects of TYSABRI may increase the risk for infections. In Study MS1 [see *Clinical Studies (14.1)*], certain types of infections, including pneumonias and urinary tract infections (including serious cases), gastroenteritis, vaginal infections, tooth infections, tonsillitis, and herpes infections, occurred more often in TYSABRI-treated patients than in placebo-treated patients [see *Warnings and Precautions (5.1)*, *Adverse Reactions (6.1)*]. One opportunistic infection, a cryptosporidial gastroenteritis with a prolonged course, was observed in a patient who received TYSABRI in Study MS1.

In Studies MS1 and MS2, an increase in infections was seen in patients concurrently receiving short courses of corticosteroids. However, the increase in infections in TYSABRI-treated patients who received steroids was similar to the increase in placebo-treated patients who received steroids.

In CD clinical studies, opportunistic infections (pneumocystis carinii pneumonia, pulmonary mycobacterium avium intracellulare, bronchopulmonary aspergillosis, and burkholderia cepacia) have been observed in <1% of TYSABRI-treated patients; some of these patients were receiving concurrent immunosuppressants [see *Boxed Warning, Warnings and Precautions (5.1, 5.4)*, *Adverse Reactions (6.1)*].

In Studies CD1 and CD2, an increase in infections was seen in patients concurrently receiving corticosteroids. However, the increase in infections was similar in placebo-treated and TYSABRI-treated patients who received steroids.

Concurrent use of antineoplastic, immunosuppressant, or immunomodulating agents may further increase the risk of infections, including PML and other opportunistic infections, over the risk observed with use of TYSABRI alone [see *Boxed Warning, Warnings and Precautions (5.1)*, *Adverse Reactions (6.1)*]. The safety and efficacy of TYSABRI in combination with antineoplastic, immunosuppressant, or immunomodulating agents have not been established. Patients receiving chronic immunosuppressant or immunomodulatory therapy or who have systemic medical conditions resulting in significantly compromised immune system function should not ordinarily be treated with TYSABRI. The risk of PML is also increased in patients who have been treated with an immunosuppressant prior to receiving TYSABRI [see *Warnings and Precautions (5.1)*].

For patients with Crohn's disease who start TYSABRI while on chronic corticosteroids, commence steroid withdrawal as soon as a therapeutic benefit has occurred. If the patient cannot discontinue systemic corticosteroids within six months, discontinue TYSABRI.

5.5 Hepatotoxicity

Clinically significant liver injury has been reported in patients treated with TYSABRI in the postmarketing setting. Signs of liver injury, including markedly elevated serum hepatic enzymes and elevated total bilirubin, occurred as early as six days after the first dose; signs of liver injury have also been reported for the first time after multiple doses. In some patients, liver injury recurred upon rechallenge, providing evidence that TYSABRI caused the injury. The combination of transaminase elevations and elevated bilirubin without evidence of obstruction is

generally recognized as an important predictor of severe liver injury that may lead to death or the need for a liver transplant in some patients.

TYSABRI should be discontinued in patients with jaundice or other evidence of significant liver injury (e.g., laboratory evidence).

5.6 Laboratory Test Abnormalities

In clinical trials, TYSABRI was observed to induce increases in circulating lymphocytes, monocytes, eosinophils, basophils, and nucleated red blood cells. Observed changes persisted during TYSABRI exposure, but were reversible, returning to baseline levels usually within 16 weeks after the last dose. Elevations of neutrophils were not observed. TYSABRI induces mild decreases in hemoglobin levels that are frequently transient.

5.7 Immunizations

No data are available on the effects of vaccination in patients receiving TYSABRI. No data are available on the secondary transmission of infection by live vaccines in patients receiving TYSABRI.

6 ADVERSE REACTIONS

6.1 Clinical Trials Experience

The most serious adverse reactions were [see *Warnings and Precautions (5)*]:

- Progressive Multifocal Leukoencephalopathy (PML)
- Hypersensitivity
- Immunosuppression/Infections

The most common adverse reactions (incidence $\geq 10\%$) were headache and fatigue in both the multiple sclerosis (MS) and Crohn's disease (CD) studies. Other common adverse reactions (incidence $\geq 10\%$) in the MS population were arthralgia, urinary tract infection, lower respiratory tract infection, gastroenteritis, vaginitis, depression, pain in extremity, abdominal discomfort, diarrhea NOS, and rash. Other common adverse reactions (incidence $\geq 10\%$) in the CD population were upper respiratory tract infections and nausea.

The most frequently reported adverse reactions resulting in clinical intervention (i.e., discontinuation of TYSABRI), in the MS studies were urticaria (1%) and other hypersensitivity reactions (1%), and in the CD studies (Studies CD1 and CD2) were the exacerbation of Crohn's disease (4.2%) and acute hypersensitivity reactions (1.5%) [see *Warnings and Precautions (5.3)*].

A total of 1617 multiple sclerosis patients in controlled studies received TYSABRI, with a median duration of exposure of 28 months. A total of 1563 patients received TYSABRI in all CD studies for a median exposure of 5 months; of these patients, 33% (n=518) received at least one year of treatment and 19% (n=297) received at least two years of treatment.

Because clinical trials are conducted under widely varying and controlled conditions, adverse reaction rates observed in clinical trials of TYSABRI cannot be directly compared to rates in the clinical trials of other drugs and may not reflect the rates observed in practice. The adverse reaction information does, however, provide a basis for identifying the adverse events that appear to be related to drug use and a basis for approximating rates.

Multiple Sclerosis Clinical Studies

The most frequently reported serious adverse reactions in Study MS1 [see *Clinical Studies (14.1)*] with TYSABRI were infections (3.2% versus 2.6% in placebo, including urinary

tract infection [0.8% versus 0.3%] and pneumonia [0.6% versus 0%]), acute hypersensitivity reactions (1.1% versus 0.3%, including anaphylaxis/anaphylactoid reaction [0.8% versus 0%]), depression (1.0% versus 1.0%, including suicidal ideation or attempt [0.6% versus 0.3%]), and cholelithiasis (1.0% versus 0.3%). In Study MS2, serious adverse reactions of appendicitis were also more common in patients who received TYSABRI (0.8% versus 0.2% in placebo) [see *Warnings and Precautions (5.4), Adverse Reactions - Infections*].

Table 2 enumerates adverse reactions and selected laboratory abnormalities that occurred in Study MS1 at an incidence of at least 1 percentage point higher in TYSABRI-treated patients than was observed in placebo-treated patients.

Table 2. Adverse Reactions in Study MS1 (Monotherapy Study)

Adverse Reactions (Preferred Term)	TYSABRI n=627 Percentage	Placebo n=312 Percentage
General		
Headache	38%	33%
Fatigue	27%	21%
Arthralgia	19%	14%
Chest discomfort	5%	3%
Acute hypersensitivity reactions**	4%	<1%
Other hypersensitivity reactions**	5%	2%
Seasonal allergy	3%	2%
Rigors	3%	<1%
Weight increased	2%	<1%
Weight decreased	2%	<1%
Infection		
Urinary tract infection	21%	17%
Lower respiratory tract infection	17%	16%
Gastroenteritis	11%	9%
Vaginitis*	10%	6%
Tooth infections	9%	7%
Herpes	8%	7%
Tonsillitis	7%	5%
Psychiatric		
Depression	19%	16%
Musculoskeletal/Connective Tissue Disorders		
Pain in extremity	16%	14%
Muscle cramp	5%	3%
Joint swelling	2%	1%

Adverse Reactions (Preferred Term)	TYSABRI n=627 Percentage	Placebo n=312 Percentage
Gastrointestinal		
Abdominal discomfort	11%	10%
Diarrhea NOS	10%	9%
Abnormal liver function test	5%	4%
Skin		
Rash	12%	9%
Dermatitis	7%	4%
Pruritus	4%	2%
Night sweats	1%	0%
Menstrual Disorders*		
Irregular menstruation	5%	4%
Dysmenorrhea	3%	<1%
Amenorrhea	2%	1%
Ovarian cyst	2%	<1%
Neurologic Disorders		
Somnolence	2%	<1%
Vertigo	6%	5%
Renal and Urinary Disorders		
Urinary incontinence	4%	3%
Urinary urgency/frequency	9%	7%
Injury		
Limb injury NOS	3%	2%
Skin laceration	2%	<1%
Thermal burn	1%	<1%

*Percentage based on female patients only.

** Acute versus other hypersensitivity reactions are defined as occurring within 2 hours post-infusion versus more than 2 hours.

In Study MS2, peripheral edema was more common in patients who received TYSABRI (5% versus 1% in placebo).

Crohn's Disease Clinical Studies

The following serious adverse events in the induction Studies CD1 and CD2 [see *Clinical Studies (14.2)*] were reported more commonly with TYSABRI than placebo and occurred at an incidence of at least 0.3%: intestinal obstruction or stenosis (2% vs. 1% in placebo), acute hypersensitivity reactions (0.5% vs. 0%), abdominal adhesions (0.3% vs. 0%), and cholelithiasis (0.3% vs. 0%). Similar serious adverse events were seen in the maintenance Study CD3. Table 3

enumerates adverse drug reactions that occurred in Studies CD1 and CD2 (median exposure of 2.8 months). Table 4 enumerates adverse drug reactions that occurred in Study CD3 (median exposure of 11.0 months).

**Table 3. Adverse Reactions in Studies CD1 and CD2
(Induction Studies)**

Adverse Reactions*	TYSABRI n=983 Percentage	Placebo n=431 Percentage
General		
Headache	32%	23%
Fatigue	10%	8%
Arthralgia	8%	6%
Influenza-like illness	5%	4%
Acute hypersensitivity reactions	2%	<1%
Tremor	1%	<1%
Infection		
Upper respiratory tract infection	22%	16%
Vaginal infections**	4%	2%
Viral infection	3%	2%
Urinary tract infection	3%	1%
Respiratory		
Pharyngolaryngeal pain	6%	4%
Cough	3%	<1%
Gastrointestinal		
Nausea	17%	15%
Dyspepsia	5%	3%
Constipation	4%	2%
Flatulence	3%	2%
Aphthous stomatitis	2%	<1%
Skin		
Rash	6%	4%
Dry skin	1%	0%
Menstrual Disorder		
Dysmenorrhea**	2%	<1%

* Occurred at an incidence of at least 1% higher in TYSABRI-treated patients than placebo-treated patients.

** Percentage based on female patients only.

**Table 4. Adverse Reactions in Study CD3
(Maintenance Study)**

Adverse Reactions*	TYSABRI n=214 Percentage	Placebo n=214 Percentage
General		
Headache	37%	31%
Influenza-like illness	11%	6%
Toothache	4%	<1%
Peripheral edema	6%	3%
Infection		
Influenza	12%	5%
Sinusitis	8%	4%
Viral infection	7%	3%
Vaginal infections**	8%	<1%
Respiratory		
Cough	7%	5%
Gastrointestinal		
Lower abdominal pain	4%	2%
Musculoskeletal and Connective Tissue		
Back pain	12%	8%
Menstrual Disorder		
Dysmenorrhea**	6%	3%

* Occurred at an incidence of at least 2% higher in TYSABRI-treated patients than placebo-treated patients.

** Percentage based on female patients only.

Infections

Progressive Multifocal Leukoencephalopathy (PML) occurred in three patients who received TYSABRI in clinical trials [see *Boxed Warning, Warnings and Precautions (5.1)*]. Two cases of PML were observed in the 1869 patients with multiple sclerosis who were treated for a median of 120 weeks. These two patients had received TYSABRI in addition to interferon beta-1a [see *Boxed Warning, Warnings and Precautions (5.1)*]. The third case occurred after eight doses in one of the 1043 patients with Crohn's disease who were evaluated for PML. In the postmarketing setting, additional cases of PML have been reported in TYSABRI-treated multiple sclerosis and Crohn's disease patients who were not receiving concomitant immunomodulatory therapy.

In Studies MS1 and MS2 [see *Clinical Studies (14.1)*], the rate of any type of infection was approximately 1.5 per patient-year in both TYSABRI-treated patients and placebo-treated patients. The infections were predominately upper respiratory tract infections, influenza, and urinary tract infections. In Study MS1, the incidence of serious infection was approximately 3%

in TYSABRI-treated patients and placebo-treated patients. Most patients did not interrupt treatment with TYSABRI during infections. The only opportunistic infection in the multiple sclerosis clinical trials was a case of cryptosporidial gastroenteritis with a prolonged course.

In Studies CD1 and CD2 [see *Clinical Studies (14.2)*], the rate of any type of infection was 1.7 per patient-year in TYSABRI-treated patients and 1.4 per patient-year in placebo-treated patients. In Study CD3, the incidence of any type of infection was 1.7 per patient-year in TYSABRI-treated patients and was similar in placebo-treated patients. The most common infections were nasopharyngitis, upper respiratory tract infection, and influenza. The majority of patients did not interrupt TYSABRI therapy during infections and recovery occurred with appropriate treatment. Concurrent use of TYSABRI in CD clinical trials with chronic steroids and/or methotrexate, 6-MP, and azathioprine did not result in an increase in overall infections compared to TYSABRI alone; however, the concomitant use of such agents could lead to an increased risk of serious infections.

In Studies CD1 and CD2, the incidence of serious infection was approximately 2.1% in both TYSABRI-treated patients and placebo-treated patients. In Study CD3, the incidence of serious infection was approximately 3.3% in TYSABRI-treated patients and approximately 2.8% in placebo-treated patients.

In clinical studies for CD, opportunistic infections (pneumocystis carinii pneumonia, pulmonary mycobacterium avium intracellulare, bronchopulmonary aspergillosis, and burkholderia cepacia) have been observed in <1% of TYSABRI-treated patients; some of these patients were receiving concurrent immunosuppressants [see *Warnings and Precautions (5.4)*]. Two serious non-bacterial meningitides occurred in TYSABRI-treated patients compared to none in placebo-treated patients.

Infusion-related Reactions

An infusion-related reaction was defined in clinical trials as any adverse event occurring within two hours of the start of an infusion. In MS clinical trials, approximately 24% of TYSABRI-treated multiple sclerosis patients experienced an infusion-related reaction, compared to 18% of placebo-treated patients. In the controlled CD clinical trials, infusion-related reactions occurred in approximately 11% of patients treated with TYSABRI compared to 7% of placebo-treated patients. Reactions more common in the TYSABRI-treated MS patients compared to the placebo-treated MS patients included headache, dizziness, fatigue, urticaria, pruritus, and rigors. Acute urticaria was observed in approximately 2% of patients. Other hypersensitivity reactions were observed in 1% of patients receiving TYSABRI. Serious systemic hypersensitivity infusion reactions occurred in <1% of patients [see *Warnings and Precautions (5.3)*]. All patients recovered with treatment and/or discontinuation of the infusion.

Infusion-related reactions more common in CD patients receiving TYSABRI than those receiving placebo included headache, nausea, urticaria, pruritus, and flushing. Serious infusion reactions occurred in Studies CD1, CD2, and CD3 at an incidence of <1% in TYSABRI-treated patients.

MS and CD patients who became persistently positive for antibodies to TYSABRI were more likely to have an infusion-related reaction than those who were antibody-negative.

6.2 Immunogenicity

Patients in Study MS1 [see *Clinical Studies (14.1)*] were tested for antibodies to natalizumab every 12 weeks. The assays used were unable to detect low to moderate levels of antibodies to natalizumab. Approximately 9% of patients receiving TYSABRI developed detectable antibodies at least once during treatment. Approximately 6% of patients had positive

antibodies on more than one occasion. Approximately 82% of patients who became persistently antibody-positive developed detectable antibodies by 12 weeks. Anti-natalizumab antibodies were neutralizing *in vitro*.

The presence of anti-natalizumab antibodies was correlated with a reduction in serum natalizumab levels. In Study MS1, the Week 12 pre-infusion mean natalizumab serum concentration in antibody-negative patients was 15 mcg/mL compared to 1.3 mcg/mL in antibody-positive patients. Persistent antibody-positivity resulted in a substantial decrease in the effectiveness of TYSABRI. The risk of increased disability and the annualized relapse rate were similar in persistently antibody-positive TYSABRI-treated patients and patients who received placebo. A similar phenomenon was also observed in Study MS2.

Infusion-related reactions most often associated with persistent antibody-positivity included urticaria, rigors, nausea, vomiting, headache, flushing, dizziness, pruritus, tremor, feeling cold, and pyrexia. Additional adverse reactions more common in persistently antibody-positive patients included myalgia, hypertension, dyspnea, anxiety, and tachycardia.

Patients in CD studies [see *Clinical Studies (14.2)*] were first tested for antibodies at Week 12, and in a substantial proportion of patients, this was the only test performed given the 12-week duration of placebo-controlled studies. Approximately 10% of patients were found to have anti-natalizumab antibodies on at least one occasion. Five percent (5%) of patients had positive antibodies on more than one occasion. Persistent antibodies resulted in reduced efficacy and an increase in infusion-related reactions with symptoms that include urticaria, pruritus, nausea, flushing, and dyspnea.

The long-term immunogenicity of TYSABRI and the effects of low to moderate levels of antibody to natalizumab are unknown [see *Warnings and Precautions (5.3)*, *Adverse Reactions (6.1)*].

Immunogenicity data are highly dependent on the sensitivity and specificity of the assay. Additionally, the observed incidence of antibody-positivity in an assay may be influenced by several factors, including sample handling, timing of sample collection, concomitant medications, and underlying disease. For these reasons, comparison of the incidence of antibodies to TYSABRI with the incidence of antibodies to other products may be misleading.

6.3 Postmarketing Experience

In addition to the adverse reactions listed above, the following adverse reactions have been identified during post-approval use of TYSABRI. Because these reactions are reported voluntarily from a population of uncertain size, it is not always possible to reliably estimate their frequency or establish a causal relationship to drug exposure: Herpes infections of the central nervous system, including herpes simplex virus (HSV) encephalitis, HSV meningitis, and herpes zoster virus meningitis.

There have been reports of eosinophilia (eosinophil count > 1,500/mm³) without clinical findings. In cases where TYSABRI therapy was discontinued the elevated eosinophil levels resolved.

7 DRUG INTERACTIONS

Because of the potential for increased risk of PML and other infections, Crohn's disease patients receiving TYSABRI should not be treated with concomitant immunosuppressants (e.g., 6-mercaptopurine, azathioprine, cyclosporine, or methotrexate) or inhibitors of TNF- α , and

corticosteroids should be tapered in those patients with Crohn's disease who are on chronic corticosteroids when they start TYSABRI therapy [see *Boxed Warning, Indications and Usage (1.2), Warnings and Precautions (5.1, 5.4)*]. Ordinarily, MS patients receiving chronic immunosuppressant or immunomodulatory therapy should not be treated with TYSABRI [see *Boxed Warning, Indications and Usage (1.1), Warnings and Precautions (5.1, 5.4)*].

8 USE IN SPECIFIC POPULATIONS

8.1 Pregnancy

Pregnancy Category C. TYSABRI has been shown to reduce pup survival in guinea pigs when given in doses 7 times the human dose, and has been shown to have hematologic effects on the fetus in monkeys when given in doses 2.3 times the human dose [see *Nonclinical Toxicology (13.2)*]. There are no adequate and well-controlled studies in pregnant women. TYSABRI should be used during pregnancy only if the potential benefit justifies the potential risk to the fetus. If a woman becomes pregnant while taking TYSABRI, consider enrolling her in the TYSABRI Pregnancy Exposure Registry by calling 1-800-456-2255.

8.3 Nursing Mothers

TYSABRI has been detected in human milk. The effects of this exposure on infants are unknown.

8.4 Pediatric Use

Safety and effectiveness of TYSABRI in pediatric patients with multiple sclerosis or Crohn's disease below the age of 18 years have not been established. TYSABRI is not indicated for use in pediatric patients.

8.5 Geriatric Use

Clinical studies of TYSABRI did not include sufficient numbers of patients aged 65 years and over to determine whether they respond differently than younger patients. Other reported clinical experience has not identified differences in responses between the elderly and younger patients.

10 OVERDOSAGE

Safety of doses higher than 300 mg has not been adequately evaluated. The maximum amount of TYSABRI that can be safely administered has not been determined.

11 DESCRIPTION

TYSABRI (natalizumab) is a recombinant humanized IgG4 κ monoclonal antibody produced in murine myeloma cells. Natalizumab contains human framework regions and the complementarity-determining regions of a murine antibody that binds to α 4-integrin. The molecular weight of natalizumab is 149 kilodaltons. TYSABRI is supplied as a sterile, colorless, and clear to slightly opalescent concentrate for intravenous infusion.

Each 15 mL dose contains 300 mg natalizumab; 123 mg sodium chloride, USP; 17.0 mg sodium phosphate, monobasic, monohydrate, USP; 7.24 mg sodium phosphate, dibasic, heptahydrate, USP; 3.0 mg polysorbate 80, USP/NF, in water for injection, USP at pH 6.1.

12 CLINICAL PHARMACOLOGY

12.1 Mechanism of Action

Natalizumab binds to the $\alpha 4$ -subunit of $\alpha 4\beta 1$ and $\alpha 4\beta 7$ integrins expressed on the surface of all leukocytes except neutrophils, and inhibits the $\alpha 4$ -mediated adhesion of leukocytes to their counter-receptor(s). The receptors for the $\alpha 4$ family of integrins include vascular cell adhesion molecule-1 (VCAM-1), which is expressed on activated vascular endothelium, and mucosal addressin cell adhesion molecule-1 (MAdCAM-1) present on vascular endothelial cells of the gastrointestinal tract. Disruption of these molecular interactions prevents transmigration of leukocytes across the endothelium into inflamed parenchymal tissue. *In vitro*, anti- $\alpha 4$ -integrin antibodies also block $\alpha 4$ -mediated cell binding to ligands such as osteopontin and an alternatively spliced domain of fibronectin, connecting segment-1 (CS-1). *In vivo*, natalizumab may further act to inhibit the interaction of $\alpha 4$ -expressing leukocytes with their ligand(s) in the extracellular matrix and on parenchymal cells, thereby inhibiting further recruitment and inflammatory activity of activated immune cells.

The specific mechanism(s) by which TYSABRI exerts its effects in multiple sclerosis and Crohn's disease have not been fully defined.

In multiple sclerosis, lesions are believed to occur when activated inflammatory cells, including T-lymphocytes, cross the blood-brain barrier (BBB). Leukocyte migration across the BBB involves interaction between adhesion molecules on inflammatory cells and their counter-receptors present on endothelial cells of the vessel wall. The clinical effect of natalizumab in multiple sclerosis may be secondary to blockade of the molecular interaction of $\alpha 4\beta 1$ -integrin expressed by inflammatory cells with VCAM-1 on vascular endothelial cells, and with CS-1 and/or osteopontin expressed by parenchymal cells in the brain. Data from an experimental autoimmune encephalitis animal model of multiple sclerosis demonstrate reduction of leukocyte migration into brain parenchyma and reduction of plaque formation detected by magnetic resonance imaging (MRI) following repeated administration of natalizumab. The clinical significance of these animal data is unknown.

In Crohn's disease, the interaction of the $\alpha 4\beta 7$ integrin with the endothelial receptor MAdCAM-1 has been implicated as an important contributor to the chronic inflammation that is a hallmark of the disease. MAdCAM-1 is mainly expressed on gut endothelial cells and plays a critical role in the homing of T lymphocytes to gut lymph tissue found in Peyer's patches. MAdCAM-1 expression has been found to be increased at active sites of inflammation in patients with CD, which suggests it may play a role in the recruitment of leukocytes to the mucosa and contribute to the inflammatory response characteristic of CD. The clinical effect of natalizumab in CD may therefore be secondary to blockade of the molecular interaction of the $\alpha 4\beta 7$ -integrin receptor with MAdCAM-1 expressed on the venular endothelium at inflammatory foci. VCAM-1 expression has been found to be upregulated on colonic endothelial cells in a mouse model of IBD and appears to play a role in leukocyte recruitment to sites of inflammation. The role of VCAM-1 in CD, however, is not clear.

12.2 Pharmacodynamics

TYSABRI administration increases the number of circulating leukocytes (including lymphocytes, monocytes, basophils, and eosinophils) due to inhibition of transmigration out of the vascular space. TYSABRI does not affect the absolute count of circulating neutrophils [see *Warnings and Precautions (5.6)*].

12.3 Pharmacokinetics

Multiple Sclerosis (MS) Patients:

In patients with MS, following the repeat intravenous administration of a 300 mg dose of TYSABRI, the mean \pm SD maximum observed serum concentration was 110 ± 52 mcg/mL. Mean average steady-state trough concentrations ranged from 23 mcg/mL to 29 mcg/mL. The observed time to steady-state was approximately 24 weeks after every four weeks of dosing. The mean \pm SD half-life, volume of distribution, and clearance of natalizumab were 11 ± 4 days, 5.7 ± 1.9 L, and 16 ± 5 mL/hour, respectively.

The effects of covariates such as body weight, age, gender, and presence of anti-natalizumab antibodies on natalizumab pharmacokinetics were investigated in a population pharmacokinetic study (n=2195). Natalizumab clearance increased with body weight in a less than proportional manner such that a 43% increase in body weight resulted in a 32% increase in clearance. The presence of persistent anti-natalizumab antibodies increased natalizumab clearance approximately 3-fold [see *Adverse Reactions (6.2)*].

Crohn's Disease (CD) Patients:

In patients with CD, following the repeat intravenous administration of a 300 mg dose of TYSABRI, the mean \pm SD maximum observed serum concentration was 101 ± 34 mcg/mL. The mean \pm SD average steady-state trough concentration was 10 ± 9 mcg/mL. The estimated time to steady-state was approximately 16 to 24 weeks after every four weeks of dosing. The mean \pm SD half-life, volume of distribution, and clearance of natalizumab were 10 ± 7 days, 5.2 ± 2.8 L, and 22 ± 22 mL/hour, respectively.

The effects of total body weight, age, gender, race, selected hematology and serum chemistry measures, co-administered medications (infliximab, immunosuppressants, or steroids), and the presence of anti-natalizumab antibodies were investigated in a population pharmacokinetic analysis (n=1156). The presence of anti-natalizumab antibodies was observed to increase natalizumab clearance [see *Adverse Reactions (6.2)*].

Pharmacokinetics of natalizumab in patients with renal or hepatic insufficiency have not been studied.

13 NONCLINICAL TOXICOLOGY

13.1 Carcinogenesis, Mutagenesis, and Impairment of Fertility

No clastogenic or mutagenic effects of natalizumab were observed in the Ames test or *in vitro* chromosomal aberration assay in human lymphocytes. Natalizumab showed no effects in *in vitro* assays of $\alpha 4$ -integrin positive human tumor line proliferation/cytotoxicity. Xenograft transplantation models in SCID and nude mice with two $\alpha 4$ -integrin positive human tumor lines (leukemia, melanoma) demonstrated no increase in tumor growth rates or metastasis resulting from natalizumab treatment.

Reductions in female guinea pig fertility were observed in one study at dose levels of 30 mg/kg, but not at the 10 mg/kg dose level (2.3-fold the clinical dose). A 47% reduction in pregnancy rate was observed in guinea pigs receiving 30 mg/kg relative to control. Implantations were seen in only 36% of animals having corpora lutea in the 30 mg/kg group versus 66 to 72% in the other groups. Natalizumab did not affect male fertility at doses up to 7-fold the clinical dose.

13.2 Animal Toxicology and/or Pharmacology

In reproductive studies in monkeys and guinea pigs, there was no evidence of teratogenic effects at doses up to 30 mg/kg (7 times the human clinical dose based on a body weight

comparison). In one study where female guinea pigs were exposed to natalizumab during the second half of pregnancy, a small reduction in pup survival was noted at post-natal day 14 with respect to control (3 pups/litter for the group treated with 30 mg/kg natalizumab and 4.3 pups/litter for the control group). In one of five studies that exposed monkeys or guinea pigs during pregnancy, the number of abortions in treated (30 mg/kg) monkeys was 33% versus 17% in controls. No effects on abortion rates were noted in any other study. TYSABRI underwent trans-placental transfer and produced *in utero* exposure in developing guinea pigs and cynomolgus monkeys. When pregnant dams were exposed to natalizumab at approximately 7-fold the clinical dose, serum levels in fetal animals at delivery were approximately 35% of maternal serum natalizumab levels. A study in pregnant cynomolgus monkeys treated at 2.3-fold the clinical dose demonstrated natalizumab-related changes in the fetus. These changes included mild anemia, reduced platelet count, increased spleen weights, and reduced liver and thymus weights associated with increased splenic extramedullary hematopoiesis, thymic atrophy, and decreased hepatic hematopoiesis. In offspring born to mothers treated with natalizumab at 7-fold the clinical dose, platelet counts were also reduced. This effect was reversed upon clearance of natalizumab. There was no evidence of anemia in these offspring. Offspring exposed *in utero* and via breast milk had no natalizumab-related changes in the lymphoid organs and had normal immune response to challenge with a T-cell dependent antigen.

14 CLINICAL STUDIES

14.1 Multiple Sclerosis

TYSABRI was evaluated in two randomized, double-blind, placebo-controlled trials in patients with multiple sclerosis. Both studies enrolled patients who experienced at least one clinical relapse during the prior year and had a Kurtzke Expanded Disability Status Scale (EDSS) score between 0 and 5.0. Results for each study are shown in Tables 5 and 6. Median time on study drug was 120 weeks in each study. In both studies, neurological evaluations were performed every 12 weeks and at times of suspected relapse. Magnetic resonance imaging evaluations for T1-weighted gadolinium (Gd)-enhancing lesions and T2-hyperintense lesions were performed annually.

Study MS1 enrolled patients who had not received any interferon-beta or glatiramer acetate for at least the previous 6 months; approximately 94% had never been treated with these agents. Median age was 37, with a median disease duration of 5 years. Patients were randomized in a 2:1 ratio to receive TYSABRI 300 mg intravenous infusion (n=627) or placebo (n=315) every 4 weeks for up to 28 months (30 infusions).

Study MS2 enrolled patients who had experienced one or more relapses while on treatment with AVONEX[®] (Interferon beta-1a) 30 mcg intramuscularly (IM) once weekly during the year prior to study entry. Median age was 39, with a median disease duration of 7 years. Patients were evenly randomized to receive TYSABRI 300 mg (n=589) or placebo (n=582) every 4 weeks for up to 28 months (30 infusions). All patients continued to receive AVONEX 30 mcg IM once weekly. The efficacy of TYSABRI alone was not compared with the efficacy of TYSABRI plus AVONEX.

The primary endpoint at 2 years was time to onset of sustained increase in disability, defined as an increase of at least 1 point on the EDSS from baseline EDSS ≥ 1.0 that was sustained for 12 weeks, or at least a 1.5 point increase on the EDSS from baseline EDSS=0 that was sustained for 12 weeks. Time to onset of sustained increase in disability was longer in TYSABRI-treated patients than in placebo-treated patients in Studies MS1 (Figure 1) and MS2.

The proportion of patients with increased disability and the annualized relapse rate were also lower in TYSABRI-treated patients than in placebo-treated patients in Studies MS1 and MS2 (Tables 5 and 6).

Table 5. Clinical and MRI Endpoints in Study MS1 (Monotherapy Study) at 2 Years

	TYSABRI n=627	Placebo n=315
Clinical Endpoints		
Percentage with sustained increase in disability	17%	29%
Relative Risk Reduction	42% (95% CI 23%, 57%)	
Annualized relapse rate	0.22	0.67
Relative reduction (percentage)	67%	
Percentage of patients remaining relapse-free	67%	41%
MRI Endpoints		
New or newly enlarging T2-hyperintense lesions		
Median	0.0	5.0
Percentage of patients with*:		
0 lesions	57%	15%
1 lesion	17%	10%
2 lesions	8%	8%
3 or more lesions	18%	68%
Gd-enhancing lesions		
Median	0.0	0.0
Percentage of patients with:		
0 lesions	97%	72%
1 lesion	2%	12%
2 or more lesions	1%	16%

All analyses were intent-to-treat. For each endpoint, $p < 0.001$. Determination of p-values: Increase in disability by Cox proportional hazards model adjusted for baseline EDSS and age; relapse rate by Poisson regression adjusting for baseline relapse rate, EDSS, presence of Gd-enhancing lesions, age; percentage relapse-free by logistic regression adjusting for baseline relapse rate; and lesion number by ordinal logistic regression adjusting for baseline lesion number.

Annualized relapse rate is calculated as the number of relapses for each subject divided by the number of years followed in the study for that subject. The value reported is the mean across all subjects.

*Values do not total 100% due to rounding.

Table 6. Clinical and MRI Endpoints in Study MS2 (Add-On Study) at 2 Years

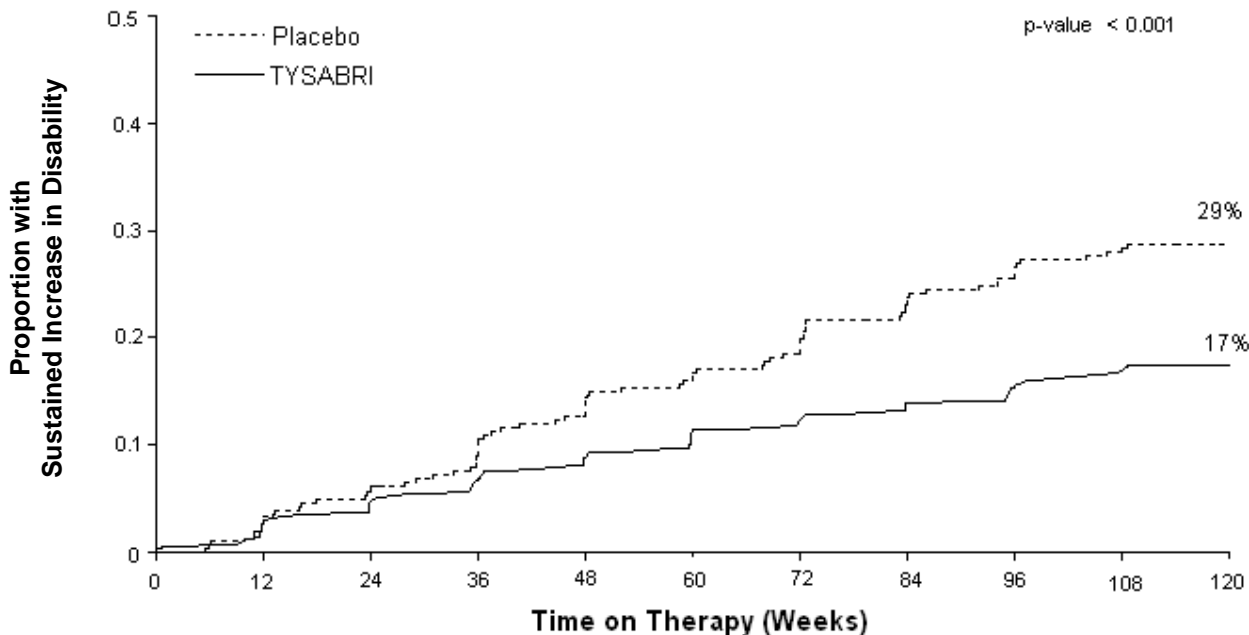
	TYSABRI plus AVONEX n=589	Placebo plus AVONEX n=582
Clinical Endpoints		
Percentage with sustained increase in disability	23%	29%
Relative Risk Reduction	24% (95% CI 4%, 39%)	
Annualized relapse rate	0.33	0.75
Relative reduction (percentage)	56%	
Percentage of patients remaining relapse-free	54%	32%
MRI Endpoints		
New or newly enlarging T2-hyperintense lesions		
Median	0.0	3.0
Percentage of patients with*:		
0 lesions	67%	30%
1 lesion	13%	9%
2 lesions	7%	10%
3 or more lesions	14%	50%
Gd-enhancing lesions		
Median	0.0	0.0
Percentage of patients with*:		
0 lesions	96%	75%
1 lesion	2%	12%
2 or more lesions	1%	14%

All analyses were intent-to-treat. For disability accumulation $p=0.024$, for all other endpoints, $p<0.001$. Determination of p-values: Increase in disability by Cox proportional hazards model adjusted for baseline EDSS; relapse rate by Poisson regression adjusting for baseline relapse rate, EDSS, presence of Gd-enhancing lesions, age; percentage relapse-free by logistic regression adjusting for baseline relapse rate; and lesion number by ordinal logistic regression adjusting for baseline lesion number.

Annualized relapse rate is calculated as the number of relapses for each subject divided by the number of years followed in the study for that subject. The value reported is the mean across all subjects.

*Values do not total 100% due to rounding.

Figure 1. Time to Increase in Disability Sustained for 12 Weeks in Study MS1



Changes in MRI findings often do not correlate with changes in the clinical status of patients (e.g., disability progression). The prognostic significance of the MRI findings in these studies has not been evaluated.

The efficacy of treatment with TYSABRI beyond two years is not known.

14.2 Crohn's Disease

The safety and efficacy of TYSABRI were evaluated in three randomized, double-blind, placebo-controlled clinical trials in 1414 adult patients with moderately to severely active Crohn's disease (Crohn's Disease Activity Index [CDAI] ≥ 220 and ≤ 450) [see Reference (15)]. Concomitant inhibitors of TNF- α were not permitted. Concomitant stable doses of aminosalicylates, corticosteroids, and/or immunosuppressants (e.g., 6-mercaptopurine, azathioprine, or methotrexate) were permitted, and 89% of patients continued to receive at least one of these medications. Although permitted in the clinical trials, combination therapy with immunosuppressants is not recommended [see *Indications and Usage (1.2)*]. Overall, approximately two-thirds of patients were not taking concomitant immunosuppressants, and approximately one-third of patients were taking neither concomitant immunosuppressants nor concomitant corticosteroids.

Induction of clinical response (defined as ≥ 70 -point decrease in CDAI from baseline) was evaluated in two studies. In Study CD1, 896 patients were randomized 4:1 to receive three monthly infusions of either 300 mg TYSABRI or placebo. Clinical results were assessed at Week 10, and patients with incomplete information were considered as not having a clinical response. At Week 10, 56% of the 717 patients receiving TYSABRI were in response compared to 49% of the 179 patients receiving placebo (treatment effect: 7%; 95% confidence interval (CI): [-1%, 16%]; $p=0.067$). In a *post hoc* analysis of the subset of 653 patients with elevated

baseline C-reactive protein (CRP), indicative of active inflammation, 57% of TYSABRI patients were in response compared to 45% of those receiving placebo (treatment effect: 12%; 95% CI: [3%, 22%]; nominal p=0.01).

In the second induction trial, Study CD2, only patients with elevated serum C-reactive Protein (CRP) were studied. A total of 509 patients were randomized 1:1 to receive three monthly infusions of either 300 mg TYSABRI or placebo. In Study CD2, in contrast to Study CD1, clinical response and clinical remission (defined as CDAI score <150) were required to be met at both Weeks 8 and 12, rather than at a single time-point; patients with incomplete information were considered as not having a response (Table 7).

Table 7. Induction of Clinical Response and Remission in Study CD2

	TYSABRI n=259	Placebo n=250	Treatment Difference (95% CI)
Clinical Response at:			
Week 8	56%	40%	16% (8%, 26%)
Week 12	60%	44%	16% (7%, 25%)
Both Weeks 8 & 12*	48%	32%	16% (7%, 24%)
Clinical Remission at:			
Week 8	32%	21%	11% (3%, 19%)
Week 12	37%	25%	12% (4%, 21%)
Both Weeks 8 & 12*	26%	16%	10% (3%, 18%)

*p <0.005

Response is defined as a ≥ 70 -point reduction in CDAI score from baseline.

Remission is defined as CDAI <150.

In studies CD1 and CD2, for subgroups defined by prior use of, or by inadequate response to prior therapies (i.e., corticosteroids, immunosuppressants, and inhibitors of TNF- α), the treatment effect was generally similar to that seen in the whole study population. In the subgroup of patients that were taking neither concomitant immunosuppressants nor concomitant corticosteroids, the treatment effect was generally similar to that seen in the whole study population. Patients with inadequate response to inhibitors of TNF- α appeared to have lower clinical response and lower clinical remission in both the treatment and placebo groups. For patients in Study CD2 with an inadequate response to prior treatment with inhibitors of TNF- α , clinical response at both Weeks 8 and 12 was seen in 38% of those randomized to TYSABRI, and clinical remission at both Weeks 8 and 12 was seen in 17%.

Maintenance therapy was evaluated in Study CD3. In this study, 331 patients from Study CD1 that had had a clinical response to TYSABRI at both Weeks 10 and 12 were re-randomized 1:1 to treatment with continuing monthly infusions of either 300 mg TYSABRI or placebo.

Maintenance of response was assessed by the proportion of patients who did not lose clinical response at any study visit for an additional 6 and 12 months of treatment (i.e., Month 9 and Month 15 after initial treatment with TYSABRI). The study also assessed the proportion of patients who did not lose clinical remission at any study visit within the subset of those who were in remission at study entry. Requiring maintenance of response or remission at each visit, as opposed to just at Month 9 or Month 15, may result in lower proportions meeting endpoint criteria, and may make a comparison of these results with those of other products used to treat Crohn's disease misleading (Table 8).

Table 8. Maintenance of Clinical Response and Remission in Study CD3

	TYSABRI	Placebo	Treatment Difference (95% CI)
	n=164	n=167	
Clinical Response through:			
Month 9*	61%	29%	32% (21%, 43%)
Month 15	54%	20%	34% (23%, 44%)
	n=128[†]	n=118[†]	
Clinical Remission through:			
Month 9*	45%	26%	19% (6%, 31%)
Month 15	40%	15%	25% (13%, 36%)

*p<0.005

†Number of patients included for analysis of “through” Month 9 and Month 15 includes only those in remission upon entry into Study CD3.

Response is defined as CDAI <220 and a ≥70-point reduction in CDAI score compared to Baseline from Study CD1. Remission is defined as CDAI <150.

For subgroups in study CD3 defined by prior use of, or by inadequate response to prior therapies (i.e., corticosteroids, immunosuppressants, and inhibitors of TNF- α), the treatment effect was generally similar to that seen in the whole study population. In the subgroup of patients that were taking neither concomitant immunosuppressants nor concomitant corticosteroids, the treatment effect was generally similar to that seen in the whole study population. Patients with inadequate response to inhibitors of TNF- α appeared to have lower maintenance of clinical response and lower maintenance of clinical remission in both the treatment and placebo groups. For patients in study CD3 with an inadequate response to prior treatment with inhibitors of TNF- α , maintenance of clinical response through Month 9 was seen in 52% of those randomized to TYSABRI, and maintenance of clinical remission through Month 9 was seen in 30%.

Given the requirement to discontinue chronic steroids it is important to note that in the subgroup of patients (n=65) who were receiving corticosteroid medication at baseline, responded to TYSABRI in Study CD1, and were re-randomized to TYSABRI in Study CD3, approximately two-thirds were able to discontinue steroids within 10 weeks of initiating a steroid taper.

15 REFERENCES

- Best WR, Bechtel JM, Singleton JW, Kern F: Development of a Crohn’s Disease Activity Index, National Cooperative Crohn’s Disease Study. *Gastroenterology* 1976; 70(3): 439-444.

16 HOW SUPPLIED/STORAGE AND HANDLING

NDC 64406-008-01, TYSABRI injection is supplied as 300 mg natalizumab in 15 mL in a sterile, single-use vial free of preservatives. Each package contains a single-use vial. TYSABRI is a colorless and clear to slightly opalescent solution for dilution prior to intravenous infusion.

TYSABRI is available only through registered infusion centers participating in the TOUCH[®] Prescribing Program. To locate these infusion centers, contact Biogen Idec at 1-800-456-2255.

TYSABRI single-use vials must be refrigerated between 2 to 8°C (36° to 46°F). Do not use beyond the expiration date stamped on the carton and vial label. DO NOT SHAKE OR FREEZE. Protect from light.

If not used immediately, store the diluted TYSABRI solution for infusion at 2 to 8°C (36° to 46°F). TYSABRI solution for infusion must be administered within 8 hours of preparation.

17 PATIENT COUNSELING INFORMATION

See FDA-approved patient labeling (Medication Guide).

17.1 General Counseling Information

Counsel patients to understand the risks and benefits of TYSABRI before an initial prescription is written. The patient may be educated by either the enrolled prescriber or a healthcare provider under that prescriber's direction. INSTRUCT PATIENTS USING TYSABRI TO:

- Read the Medication Guide before starting TYSABRI and before each TYSABRI infusion.
- Promptly report any new or continuously worsening symptoms that persist over several days to their prescriber [see *Boxed Warning, Warnings and Precautions (5.1)*].
- Inform all of their physicians that they are receiving TYSABRI.
- Plan to see their prescriber three months after the first infusion, six months after the first infusion, and at least as frequently as every six months thereafter.

17.2 Progressive Multifocal Leukoencephalopathy

Inform patients that Progressive Multifocal Leukoencephalopathy (PML) has occurred in patients who received TYSABRI. Instruct the patient of the importance of contacting their doctor if they develop any symptoms suggestive of PML. Instruct the patient that typical symptoms associated with PML are diverse, progress over days to weeks, and include progressive weakness on one side of the body or clumsiness of limbs, disturbance of vision, and changes in thinking, memory, and orientation leading to confusion and personality changes. Instruct the patient that the progression of deficits usually leads to death or severe disability over weeks or months [see *Warnings and Precautions (5.1)*].

17.3 Hypersensitivity Reactions

Instruct patients to report immediately if they experience symptoms consistent with a hypersensitivity reaction (e.g., urticaria with or without associated symptoms) during or following an infusion of TYSABRI [see *Warnings and Precautions (5.3)*].

17.4 Immunosuppression/Infections

Inform patients that TYSABRI may lower the ability of their immune system to fight infections. Instruct the patient of the importance of contacting their doctor if they develop any symptoms of infection [see *Warnings and Precautions (5.4)*].

17.5 Hepatotoxicity

Inform patients that TYSABRI may cause liver injury. Instruct the patient to contact their doctor if they develop symptoms of hepatotoxicity [see *Warnings and Precautions (5.5)*].

I61061-18

TYSABRI (natalizumab)

Manufactured by:
Biogen Idec Inc.
14 Cambridge Center
Cambridge, MA 02142 USA
1-800-456-2255

© 2012-13 Biogen Idec Inc. All rights reserved.

TYSABRI[®], AVONEX[®], and TOUCH[®] are registered trademarks of Biogen Idec.

U.S. Patent Numbers: 5,840,299; 6,602,503

MEDICATION GUIDE

TYSABRI® (tie-SA-bree) (natalizumab)

Read the Medication Guide given to you before you start TYSABRI and before each infusion. There may be new information. This Medication Guide does not take the place of talking to your doctor about your medical condition or your treatment. Ask your doctor or nurse if you have any questions.

What is the most important information I should know about TYSABRI?

- **TYSABRI increases your chance of getting a rare brain infection that usually causes death or severe disability. This infection is called progressive multifocal leukoencephalopathy (PML).** If PML happens, it usually happens in people with weakened immune systems.
- No one can predict who will get PML.
- There is no known treatment, prevention, or cure for PML.
- Your chance of getting PML may be higher if you are also being treated with other medicines that can weaken your immune system, including other treatments for Multiple Sclerosis (MS) and Crohn's disease (CD). You should not take certain medicines that weaken the immune system at the same time you are taking TYSABRI. Even if you use TYSABRI alone to treat your MS or CD, you can still get PML.
 - Your chance of getting PML increases if you have been exposed to John Cunningham Virus (JCV). JCV is a common virus that is harmless in most people but can cause PML in people who have weakened immune systems, such as people taking Tysabri. Most people who are exposed to JCV do not know it or have any symptoms. This exposure usually happens in childhood.
 - If you have been exposed to JCV, your chance of getting PML increases even more if:
 - you have received TYSABRI for a long time, especially longer than 2 years
 - you have received certain medicines that can weaken your immune system before you start receiving TYSABRI

Your doctor may do a blood test to check if you have been exposed to JCV before you start receiving TYSABRI or during your treatment. There may be other risk factors for getting PML during Tysabri treatment that we do not know about yet.

- Your risk of getting PML is greatest if you have all 3 risk factors listed above. Your doctor should discuss the risks and benefits of TYSABRI treatment with you before you decide to receive TYSABRI.
- TYSABRI is available only through a restricted distribution program called the TOUCH[®] Prescribing Program. In order to receive TYSABRI, you must talk to your doctor and understand the benefits and risks of TYSABRI and agree to all of the instructions in the TOUCH[®] Prescribing Program.
- If you take TYSABRI, it is important that you call your doctor right away if you get any new or worsening medical problems (such as a new or sudden change in your thinking, eyesight, balance, or strength or other problems) that have lasted over several days. Tell all of your doctors that you are getting treatment with TYSABRI.

See “**What are the possible side effects with TYSABRI?**” for other serious side effects with TYSABRI.

What is TYSABRI?

TYSABRI is a prescription medicine approved for:

1. Adult patients with relapsing forms of Multiple Sclerosis (MS) to:

- Slow the worsening of disability that is common in patients with MS and,
- Decrease the number of flare-ups (relapses)

Because of the chance of getting PML, TYSABRI is generally recommended for patients that have not been helped enough by, or cannot tolerate another treatment for MS.

2. Adult patients with moderate to severe Crohn’s disease:

- To reduce signs and symptoms of Crohn’s disease
- In patients who have not been helped enough by, or cannot tolerate usual Crohn’s disease medicines and medicines called tumor necrosis factor (TNF) inhibitors.

- TYSABRI does not cure MS or Crohn’s disease.
- TYSABRI has not been studied for use longer than 2 years.
- TYSABRI has not been studied in patients with chronic progressive MS.
- It is not known if patients older than 65 years have a different response to TYSABRI.
- TYSABRI is not approved for use in patients under age 18.

TYSABRI is only:

- prescribed by doctors who are enrolled in the TOUCH[®] Prescribing Program
- infused at an infusion center that is enrolled in the TOUCH[®] Prescribing Program

- given to patients who are enrolled in the TOUCH[®] Prescribing Program

Who should not receive TYSABRI?

Do not receive TYSABRI if you:

- have PML
- are allergic to TYSABRI

TYSABRI is not recommended if you:

- have a medical condition that can weaken your immune system such as HIV infection or AIDS, leukemia or lymphoma, or an organ transplant, and others.
- are taking medicines that can weaken your immune system. Talk with your doctor about all of the medicines you take or have taken.

If you have questions about any of the above, talk to your doctor.

What should I tell my doctor and nurse before receiving each infusion of TYSABRI?

Tell your doctor and nurse about all of your medical conditions. Tell them if you:

- have any new or worsening medical problems (such as a new or sudden change in your thinking, eyesight, balance, or strength or other problems) that have lasted several days
- have had hives, itching or trouble breathing during or after an infusion of TYSABRI
- have a fever or infection (including shingles or any unusually long lasting infection)
- are pregnant or plan to become pregnant
- **are breastfeeding or plan to breastfeed. TYSABRI can pass into your milk.** It is not known if the TYSABRI that passes into breast milk can harm your baby.
- Tell your doctor and nurse about all of the medicines you are taking, including prescription and non-prescription medicines, vitamins and herbal supplements.
- Know the medicines you take. Keep a list of them with you to show your doctor and nurse. The nurse may ask to see this list before every TYSABRI infusion.

How do I receive TYSABRI?

- TYSABRI is given once every four weeks through a needle placed in a vein (IV infusion).

- You must follow all the instructions of the TOUCH[®] Prescribing Program. Before you can begin to receive TYSABRI, your doctor or nurse will:
 - explain the TOUCH[®] Prescribing Program to you
 - have you sign the TOUCH[®] Prescriber/Patient Enrollment Form
- Before every TYSABRI infusion you will be asked a series of questions to confirm that TYSABRI is still right for you.
- Call your doctor who prescribes TYSABRI right away to report any medical problems that keep getting worse and last several days.

What are the possible side effects of TYSABRI?

TYSABRI increases your chance of getting a rare brain infection that usually causes death or severe disability. This infection is called progressive multifocal leukoencephalopathy (PML). If PML happens, it usually happens in people with weakened immune systems. (see “What is the most important information I should know about TYSABRI?”)

Other serious side effects with TYSABRI include:

- **Infections.** TYSABRI may increase your chance of getting an unusual or serious infection because TYSABRI can weaken your immune system.
- Allergic reactions including serious allergic reactions. Symptoms can include:

• Hives	• chills
• itching	• rash
• trouble breathing	• nausea
• chest pain	• flushing of skin
• dizziness	• low blood pressure
• wheezing	
- Serious allergic reactions usually happen within 2 hours of the start of the infusion, but they can happen at any time after receiving TYSABRI.
- Tell your doctor or nurse right away if you have any symptom of an allergic reaction, even if it happens after you leave the infusion center. You may need treatment if you are having an allergic reaction.
- **Liver damage.** TYSABRI may cause liver damage. Symptoms can include:

• yellowing of the skin and eyes (jaundice)	• unusual darkening of the urine
• nausea	• feeling tired or weak

- vomiting

Blood tests can be done to check for liver damage. Call your doctor right away if you have symptoms of liver damage.

Other side effects with TYSABRI include:

- headache
- urinary tract infection
- lung infection
- pain in your arm and legs
- vaginitis
- nose and throat infections
- feeling tired
- joint pain
- depression
- diarrhea
- rash
- stomach area pain

Tell your doctor about any side effect that bothers you or that does not go away.

These are not all the side effects with TYSABRI. Ask your doctor for more information.

General information about the safe and effective use of TYSABRI

This Medication Guide provides a summary of the most important information about TYSABRI. If you would like more information or have any questions, talk with your doctor or nurse. You can ask your doctor or nurse for information about TYSABRI that is written for healthcare professionals. You can also call 1-800-456-2255 or visit **www.TYSABRI.com**.

Call your doctor for medical advice about side effects. You may report side effects to FDA at 1-800-FDA-1088.

What are the ingredients in TYSABRI?

Active ingredient: natalizumab

Inactive Ingredients: sodium chloride, sodium phosphate, monobasic, monohydrate; sodium phosphate, dibasic, heptahydrate; polysorbate 80, and water for injection.

This Medication Guide has been approved by the U.S. Food and Drug Administration.

I61061-18
Revised 04/2013

Manufactured by: Biogen Idec Inc., 14 Cambridge Center, Cambridge, MA 02142 USA

TYSABRI® and TOUCH® are registered trademarks of Biogen Idec.